

# IESVE TRAINER



**Sriman NCVK**  
Head of Asia  
Business Development  
Manager at IES Ltd.

**Ressy J. Yanti**  
Junior Researcher  
INSGREEB UGM



**Ivan Hidayat**  
ESD Engineer  
AFOGREEN BUILD



# EVENT

August 1st, 2019

8.00 AM - 3.30 PM

Bulaksumur Room, Gadjah Mada

University Club (Hotel UC)

Quota: 80 People (FREE)

CP: Rahma 085799810117

(WA Only)

# CONTACT US

**INSGREEB UGM.** Department of Nuclear  
Engineering and Engineering Physics UGM

+62-274-580882

insgreeb@ugm.ac.id

**IESVE.** Sriman NCVK

Singapore (+65 91549715)

Malaysia (+60 149752905)

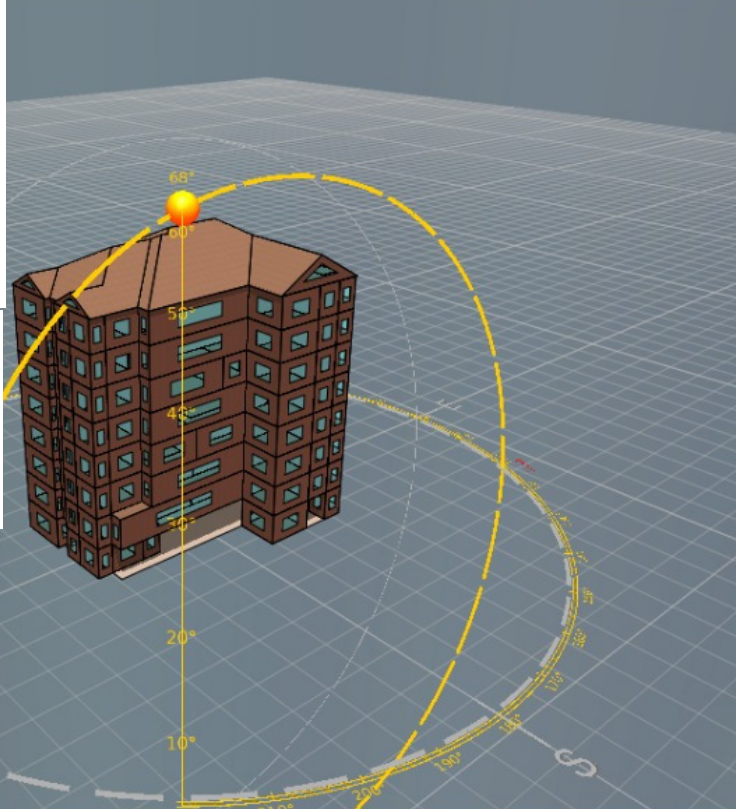
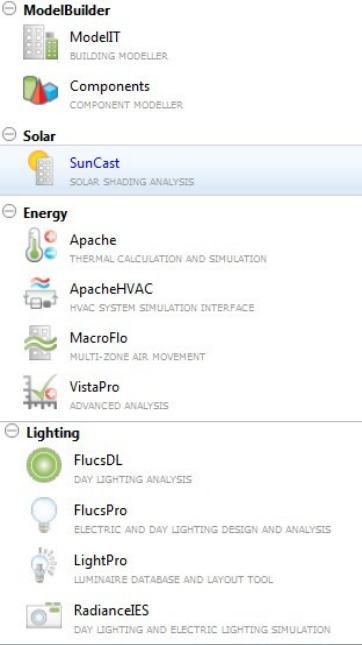
srیمان.ncvk@iesve.com

www.iesve.com

# IESVE WORKSHOP

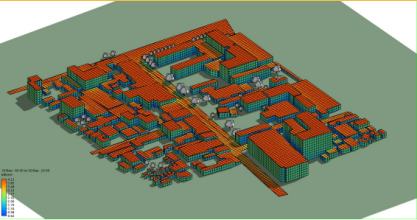
Energy Analysis and Sustainability  
Modelling Application



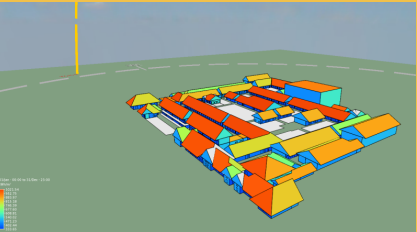


# RESEARCH BY INSGREEB

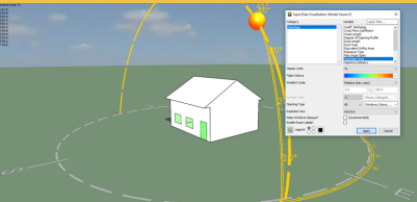
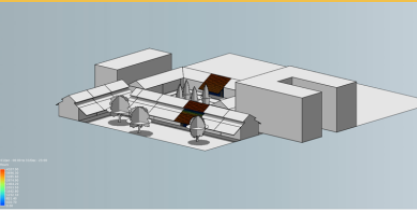
- Solar Energy Potential Analysis in Malioboro Area Based on Solar Irradiation Modelling



- Characterization of Thermal Environment in SMK Negeri 3 Yogyakarta



- Effect of Opening Area toward Classroom Thermal Comfort in Old and New Buildings of SMK N 3 Yogyakarta



# IESVE

The IES Virtual Environment (IESVE) translates complex building physics principles and detailed dynamic thermal calculations into extensive and easy to understand technical information and visualisation. It is an essential digital construction tool for top architects, engineers and contractors. IESVE helps to create sustainable buildings and intelligent cities and communities that consume significantly less energy.

# RESEARCH BY INSGREEB

- Analysis of Gaussian Process for Predicting Thermal Sensor Placement in A Building Based on CFD

